

Vidya Prasarak Samiti's
C.S.Bembalagi Arts, Sha.M.R.Palaresha Science & G.L.Rathi
Commerce Degree College Ramdurg-591123 Dist.Belagavi

STUDENTS' SATISFACTORY SURVEY REPORT

Students are informed to tick the appropriate option for the following questions on overall performance of the institution.

=====

- 1. Overall teachers participation in providing the quality education.**
a. Satisfactory b. Good c. Very good d. Excellent
- 2. Library facility available in the college.**
a. Satisfactory b. Good c. Very good d. Excellent
- 3. Use of ICT by a teacher in the class room.**
a. Satisfactory b. Good c. Very good d. Excellent
- 4. Mode of conducting the examination in the college.**
a. Satisfactory b. Good c. Very good d. Excellent
- 5. Sports facility available in the college.**
a. Satisfactory b. Good c. Very good d. Excellent
- 6. Services provided by non-teaching staff in office for getting admission, scholarship etc.**
a. Satisfactory b. Good c. Very good d. Excellent
- 7. Computer lab and Language lab facility available in the college.**
a. Satisfactory b. Good c. Very good d. Excellent
- 8. Time schedule fixed for functioning of college.**
a. Satisfactory b. Good c. Very good d. Excellent
- 9. Provision for getting admission in supporting services, like NCC, NSS, Ranger & Rover and Red Cross Units etc.**
a. Satisfactory b. Good c. Very good d. Excellent
- 10. Other facilities available in the college.**
a. Satisfactory b. Good c. Very good d. Excellent

Signature of the student

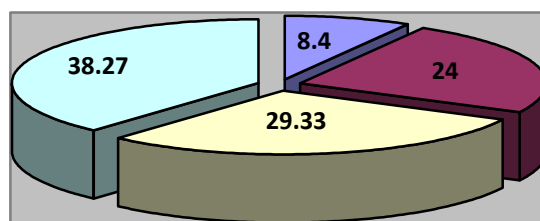
2.7.1 Response from students on Students Satisfaction Survey on performance of the institution

It is a routine part of our college to assess the quality of the faculty and the overall performance of the institution with available resources by students who are the real stakeholders of the institution. The consolidated report of the student's feedback on teachers and institution for the year 2018-19 is as under.

The questionnaires consisting of ten questions are prepared by senior faculty members under the supervision of the Principal of the institution and are issued to students in the classrooms to give their feedback.

The feedback from students is collected by visiting the classrooms randomly. The answer sheets from the students are valued by a group of senior faculty members and the results are analyzed on Pie Chart, the grade points of the questionnaires are consolidated at single average percentage of facility available in the college. The overall percentage of results of the students is displayed in the Pie Charts as under.

- | | |
|-----------------|----------|
| 1. Satisfactory | : 08.40% |
| 2. Good | : 24% |
| 3. Very Good | : 29.33% |
| 4. Excellent | : 38.27% |



The result sheet along with valued answer scripts of the students are preserved in IQAC.